

Kirkman's



Located on one of the most elevated sites overlooking the Sand River, Kirkman's Kamp has spectacular views of the unspoilt wilderness as far as the eye can see. It is bordered on two sides by the Kruger National Park.

Kirkman's Kamp forms part of Exeter Game Lodges situated in the Sabi Sand Private Game Reserve which is part of the greater Kruger National Park conservancy.

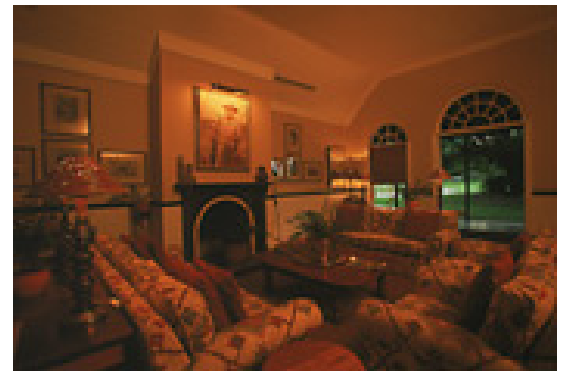
The original homestead, built in the very early twenties and substantially improved in 1922 now serves as the recreational centre of the camp.

A large lounge/ dining room and a parlour decorated in

1920's style with many old photographs and memorabilia, will take you back through the years.

The tennis court which provided a venue for tennis tournaments as early as the 1930s can still be found in its original position. The only facility not in evidence in the 20's but which is now provided for your comfort, is a swimming pool.

Breakfast and lunch are either served in the main house, or on the shady surrounding verandahs. Dinner is a very special event taken under the stars in a reed enclosed boma around a camp fire.



The bedrooms consist of eighteen guest cottages with private verandahs offering magnificent views of the surrounding bush. Each cottage is furnished in the same style as the main house and has an en-suite bathroom featuring ball and claw baths. Every detail is as authentic as possible, except for the air-conditioning and overhead fans.

At Kirkman's Kamp there are never more than thirty six guests. The colonial atmosphere of an old South African homestead complete with both style and luxury is cherished.

In the interests of personal safety, and in keeping with the exclusivity synonymous with Kirkman's Kamp - no children under 12 are permitted into the camp.